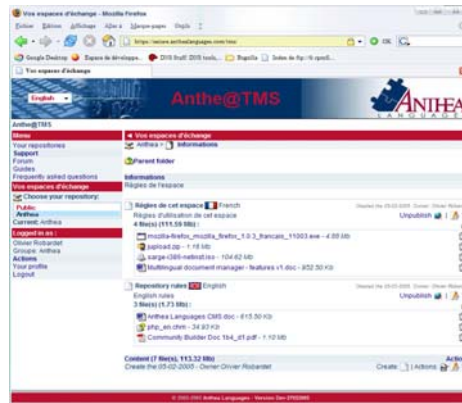




Translation    Localization    Terminology    Content management

## :: Your multilingual translation management solution

### ANTHE@TMS



In order to streamline the process of managing and updating our customers' multilingual documents, we use a very powerful web-based translation management system: **ANTHE@TMS**.

Any authorized user in your company can access our document management platform to view, add and update documents and objects in any language.

Each time a document is added or updated, it is compared against existing older versions. The system detects similar text segments that can be re-used from these text files. **Only updated sections of the document will be translated.** The system generates an alert to a pre-identified project manager at ANTHEA, with the instruction to translate it into all other languages of the system, or to send you a budget quote for your approval.

Managing the various language versions of your documents is therefore significantly easier. **ANTHE@TMS** helps you **save time and money**, while ensuring consistency of your corporate contents in all languages.

**Centralized**  
document management

**Secure** access to confidential data

**Access level** of each user defined  
by System Manager

ANTHEA Languages provides a full range of services in the area of international business, including **multilingual content management** and **translation** in more than forty languages, software and website **localization**, **language training** and **consulting**, management seminars, as well as international communication strategy building.

At ANTHEA our mission is to help each of our customers overcome cultural, linguistic and economic barriers to become a significant player in the ever expanding world of international business.



#### ANTHEA Languages

WTC 2 120 route des Macarons  
F-06560 SOPHIA ANTIPOLIS, France

Phone. +33(0)4 9715 3060  
Fax +33(0)4 9715 3061

Info-fr@anthealanguages.com

8 quai Godefroid Kurth  
B-4020 LIEGE, Belgique

Phone +32(0)4 344 4566  
Fax +32(0)4 344 6595

Info@anthealanguages.com

[www.anthealanguages.com](http://www.anthealanguages.com)

ISO 9001  
CERTIFIED  
QUALITY  
SYSTEM



	Features	Requirements
General	<ul style="list-style-type: none"> <li>• Compatible with all type of contents: articles, procedures, plans, technical manuals, links, pictures...</li> <li>• Easy on-line access with any standard Internet browser</li> <li>• Document exchange and retrieval from any location, inside or outside the company.</li> <li>• Powerful combination of content management capabilities and professional translation services.</li> <li>• System based on an open source solution: it is constantly improved by an international team of IT engineers and developers.</li> <li>• Data transmission security: SSL encryption.</li> <li>• LAMP environment (Linux/Apache/MySQL/PHP)</li> </ul>	<p><i>High speed internet connection</i></p> <p><i>Internet browser *</i></p> <p><i>Java Virtual Machine*</i></p> <p><i>*Latest version of software supplied free of charge by ANTHEA</i></p>
Language management	<ul style="list-style-type: none"> <li>• The system supports all languages. One of our project managers is designated to processing translations into one or several languages.</li> <li>• The project manager is automatically informed that an element has been modified or added into the system.</li> <li>• For each language, the relevant translator receives the instruction to download, translate and add the document into the system.</li> <li>• The users can view a translated version as soon as it is added into the system.</li> <li>• The system automatically displays all the elements in the language of your choice.</li> <li>• As the system is centralized, the whole document database is accessible from everywhere around the world, through the Internet.</li> <li>• Each user is allowed either to view, upload, download or modify documents, according to the parameters that have been set up in his/ her User Profile.</li> </ul>	<p>The full Translation Management package includes:</p> <ul style="list-style-type: none"> <li>• Professional hosting on a server with high speed access.</li> <li>• A team of designated project managers at ANTHEA</li> <li>• One or several IT engineers at ANTHEA, dedicated to system administration and regulation.</li> <li>• Training and support</li> </ul>